

How do I enable Proxy PAC file support on NetScaler Gateway?

Background

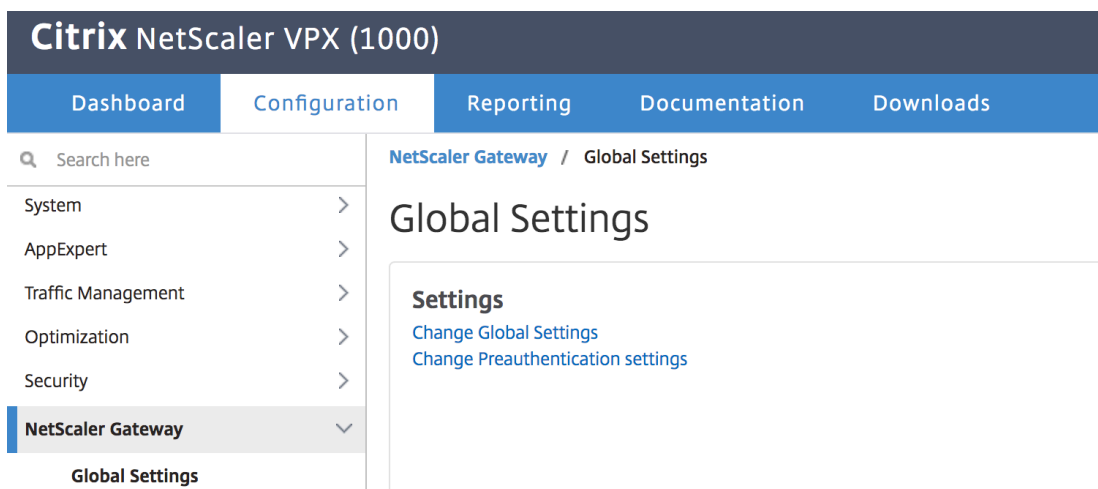
PAC files are used to configure multiple proxy servers that handle client traffic and to load-balance the proxy traffic based on the volume of traffic on a subnet. PAC file URL is pushed to the client browser. The traffic initiated from browser is then redirected to the respective proxies based on the conditions defined in the PAC file.

Use case

The admin wants to push the PAC file URL to the client browser once the user logs into the NetScaler Gateway (valid only for Full VPN mode)

Steps to achieve this

1. Login to the NetScaler GUI and navigate to **Configuration -> NetScaler Gateway -> Global Settings -> Change Global Settings**



2. Here, navigate to **Client Experience -> Advanced Settings -> Proxy tab**. Select **Browser** radio button and select the Use Automatic Configuration. Enter the *URL To Auto Proxy Config File*.

Single Sign-on with Windows*

OFF

Client Cleanup Prompt*

ON

UI Theme*

Default

Advanced Settings

General Client Cleanup **Proxy**

OFF BROWSER NS

Automatic Configuration

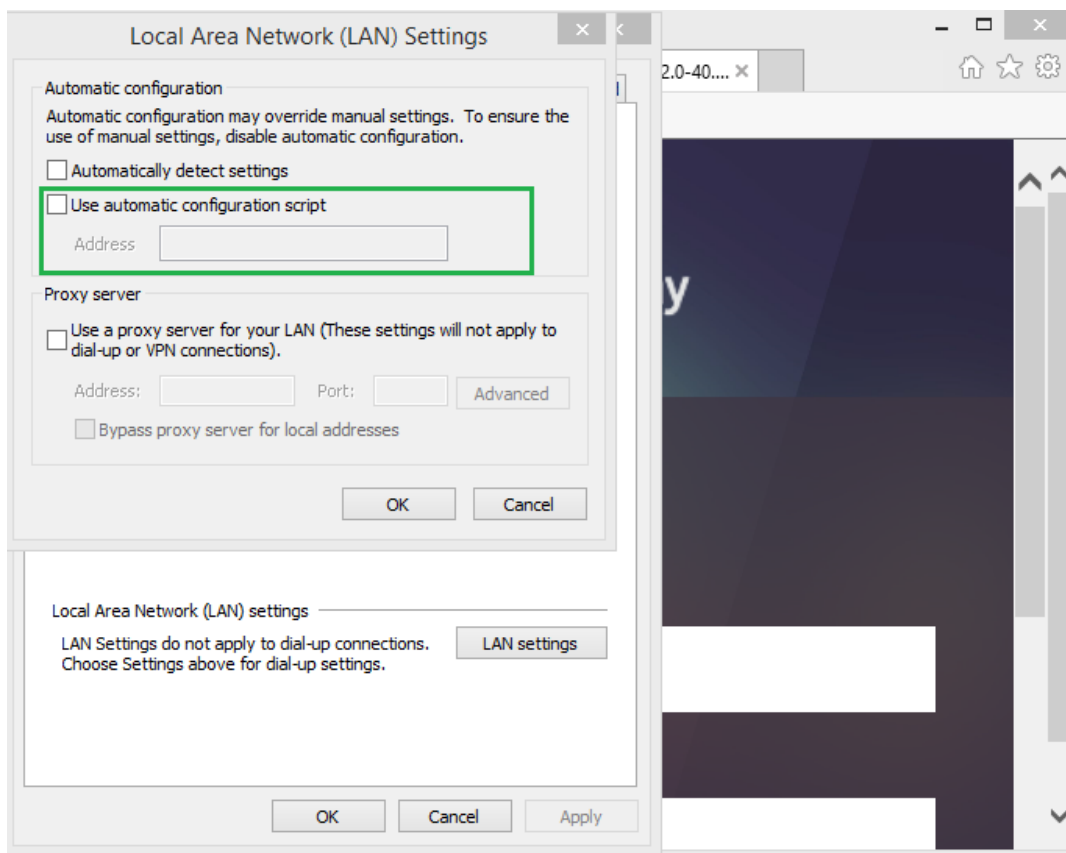
Use Automatic Configuration

URL To Auto Proxy Config File

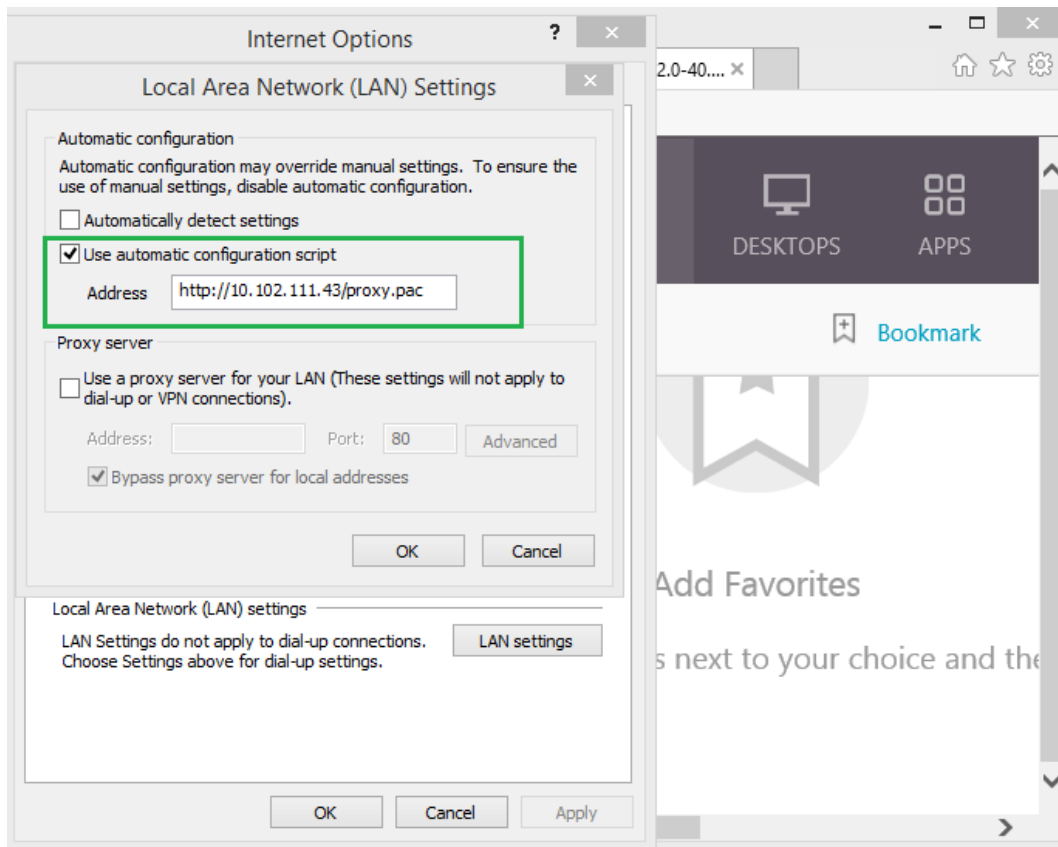
http://10.102.111.43/proxy.pac

Client behavior after enabling the configuration

1. Before login and after logout



2. After login



Please note: NetScaler Gateway provides the flexibility to configure this feature at session policy level as well.