

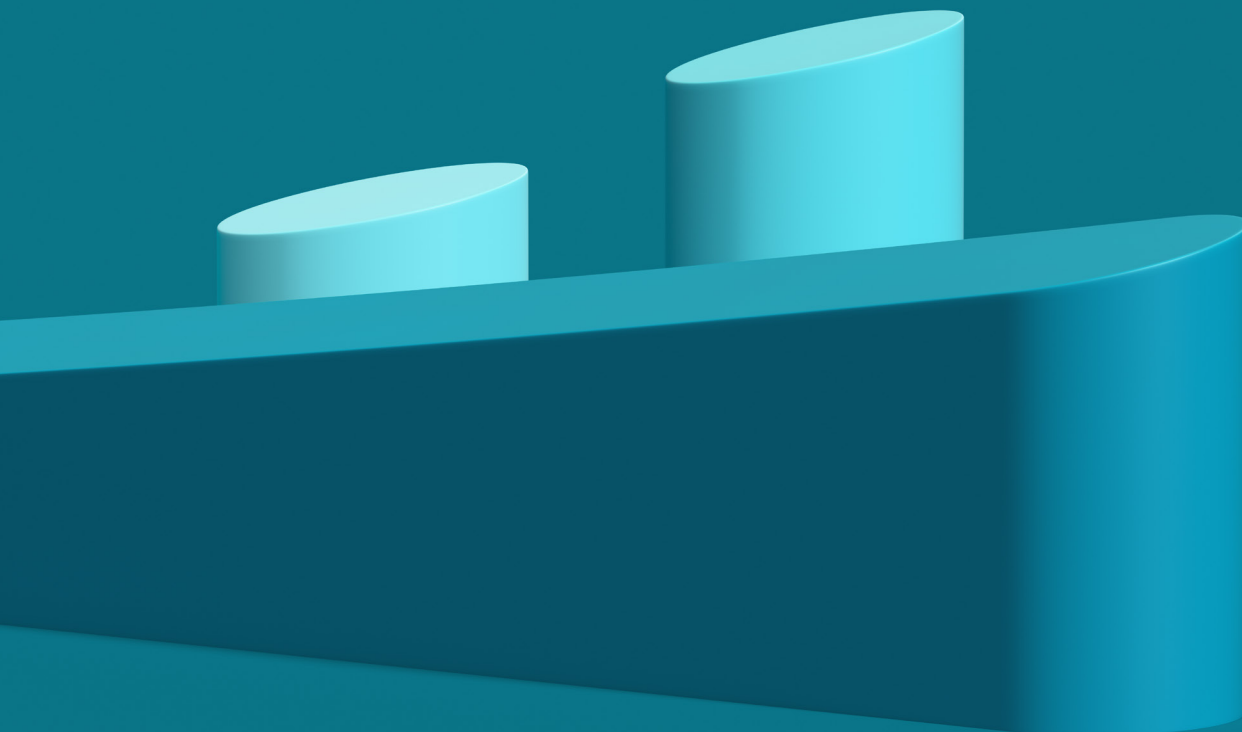
# Citrix Solution Guide for Healthcare Organizations

Use this guide to understand how Citrix delivers the solutions your healthcare organization needs to best meet your business and IT challenges. You'll get a closer look at how our solutions address top healthcare concerns, including:

Cybersecurity

Financial constraints

Talent shortage and employee burnout



# Citrix Solutions for Healthcare

Key Healthcare Challenge	Citrix Solution	Description
Cybersecurity		
<ul style="list-style-type: none"> <li>• Securing remote workers</li> <li>• Securing third parties and affiliates</li> <li>• Preventing cross-platform, cross-app data loss</li> <li>• Protecting against internet-based attacks</li> <li>• Protecting against endpoint-based malware/attacks</li> <li>• Creating secure access to IT-sanctioned apps</li> </ul>	<ul style="list-style-type: none"> <li>• Citrix Virtual Apps and Desktops</li> <li>• DaaS</li> <li>• App Protection</li> <li>• Secure Private Access</li> <li>• Security Analytics</li> <li>• Citrix Device Posture Service</li> </ul>	<p>The combination of these products and features will allow organizations to securely deliver any application and or data set, regardless of where the workload is hosted (data center, cloud, SaaS) to any endpoints including corporate, bring your own device (BYOD), or third party with minimal user experience impact. With more granular controls, organizations can adjust security settings in real time to what is contextually appropriate for the workflow. These tools also help organizations address the risks associated with the changing access methodology and or data sensitivity.</p>
Financial constraints		
<ul style="list-style-type: none"> <li>• Enabling remote hiring/working</li> <li>• Onboarding and offboarding of contractors and contingent workers</li> <li>• Enabling (In-)Home Healthcare</li> <li>• Increasing device longevity</li> <li>• Improving IT efficiency</li> </ul>	<ul style="list-style-type: none"> <li>• Citrix Virtual Apps and Desktops</li> <li>• DaaS</li> <li>• Gateway Service</li> <li>• StoreFront</li> <li>• Secure Private Access</li> <li>• Citrix Federated Authentication Service</li> <li>• Citrix Provisioning Services</li> <li>• Security Analytics</li> </ul>	<p>Citrix enables simplified, secure user access and provisioning regardless of the workstyle or employee category. When delivering enterprise resources to employees, the experience should be the same whether they work in the office, remote, or as part of a 3rd party engagement. Citrix gives you the flexibility to deploy your staff however you want, with a consistent experience no matter where they are located. Citrix solutions also deliver robust security features to ensure your most sensitive data is protected everywhere.</p>
Talent shortage and employee burnout		
<ul style="list-style-type: none"> <li>• Increasing Productivity</li> <li>• Enabling remote work for employee wellbeing</li> <li>• Onboarding and offboarding of contractors and contingent workers</li> </ul>	<ul style="list-style-type: none"> <li>• Citrix Virtual Apps and Desktops</li> <li>• DaaS</li> <li>• Gateway Service</li> <li>• StoreFront</li> <li>• Secure Private Access</li> <li>• Citrix Federated Authentication Service</li> </ul>	<p>End user experience is a key factor in employee productivity as well as managing burnout.</p> <p>When factoring in talent shortages, staff turnover, and the expanded use of contracted workforces, delivering a simplified, secure delivery of enterprise resources is a requirement.</p> <p>With Citrix solutions you can create secure access to all your enterprise resources, to every employee, regardless of workstyle or location with a single authentication point.</p> <p>With simplified provisioning, granular and contextual security controls, and comprehensive device support, Citrix empowers healthcare organizations with the flexibility to deliver solutions that support the needs of the dynamically changing healthcare landscape.</p>

## Solution Key

**Citrix Virtual Apps and Desktops /Citrix DaaS** secures the delivery of Windows, Linux, Web and SaaS apps to any device from anywhere

**Citrix Secure Private Access** is a Zero Trust Network Access (ZTNA) solution that delivers adaptive access to IT sanctioned applications whether they are deployed on-prem, or in the cloud

**Citrix Provisioning Services**, is the Citrix software technology for centrally managing virtual environments. It reduces the operational and storage costs for virtual desktop interfaces (VDI) and virtual app environments by delivering patches, updates, and other configuration information to multiple virtual endpoints through a single “gold” image. This simplifies management, accelerates upgrades, and helps reduce overall costs for virtual app and desktop delivery.

**App Protection** protects against key logging malware by scrambling the data sent from the keystrokes, turning the sensitive information into undecipherable text that will be unusable by the hacker. It also defends against screenshot malware, capturing a picture of a blank screen instead of your private corporate data and against malicious sharing of data with app watermarking, allowing organizations additional controls of data protection.

**Security Analytics** allows customers real-time assessment, detection, and prevention of security threats. Leveraging multiple intelligence vectors for anomalies in access, behavior, and location scenarios.

**Citrix Gateway** provides enhanced security controls, centralized management policy, monitoring, and visibility while providing secure access to virtualized, SaaS, and web apps from a single portal.

**The Citrix Federated Authentication Service (FAS)** is a privileged component designed to integrate with Active Directory Certificate Services. It dynamically issues certificates for users, allowing them to log on to an Active Directory environment as if they had a smart card. Citrix FAS simplifies this process by integrating with the user’s existing authentication system

**Citrix Device Posture Service** is a solution that helps admins enforce certain requirements that devices must meet to gain access to Citrix resources. This service enforces zero trust principles by checking the devices for compliance, for both managed and BYOD before allowing user access

**Citrix StoreFront** is an enterprise app store for users that aggregates and presents virtual app and desktop resources from on-premises and hybrid deployments—delivering a near-native user experience across Citrix Workspace app on any platform. Citrix StoreFront enables your mobile workforce to work from anywhere.



### Enterprise Sales

North America | 800-424-8749

Worldwide | +1 408-790-8000

### Locations

Corporate Headquarters | 851 Cypress Creek Road, Fort Lauderdale, FL 33309, United States

Silicon Valley | 4988 Great America Parkway, Santa Clara, CA 95054, United States

© 2023. Cloud Software Group, Inc. All rights reserved. Citrix and the Citrix logo are trademarks or registered trademarks of Cloud Software Group, Inc. or its subsidiaries in the United States and/or other countries. All other product and company names and marks in this document are the property of their respective owners and mentioned for identification purposes only.