



# Citrix NetScaler and Microsoft SharePoint 2013 Hybrid Deployment Guide

2013 Deployment Guide

**Table of Contents**

Overview	3
SharePoint Hybrid Deployment Overview	3
Workflow	4
Step by Step Configuration on Citrix NetScaler	6
Summary	12
Appendix	12

## Overview

Office 365 is Microsoft (MS) Office delivered as SaaS. This deployment guide provides guidance on a hybrid solution to deploy Office 365 with Citrix NetScaler and improve the efficiency and performance of the solution. A hybrid deployment enables customers to retain necessary modules within their datacenter while making the rest of the data available through the cloud. With Identify federation and trusted communication between SharePoint Online and SharePoint 2013 Server, a hybrid solution also offers a seamless user experience for the end user. When a customer establishes this trust framework, integrated functionality between services and features such as Search, Microsoft Business Connectivity Services, and Duet Enterprise Online for Microsoft SharePoint and SAP can be configured.

Of the three topologies for hybrid deployment, recommended below, One way inbound and two way, require deploying a reverse proxy solution.

- One way Outbound: On-premises SharePoint Server 2013 Enterprise Search portal can reach out to SharePoint Online (Part of Office 365) but vice versa is not true
- One way inbound: SharePoint Online search portal can reach out to On-premises deployment but vice versa is not true
- Two way: On-premises SharePoint Server 2013 Enterprise Search portal and SharePoint Online search portal can reach out to each other

In one way outbound the traffic flow originates from internal network and does not require a reverse proxy to work. However, when the traffic comes from outside to the internal network and as per the Microsoft guidelines, a reverse proxy is required. The NetScaler® reverse-proxy solution is not only the best in the industry, but also enables use cases like identity federation and single-sign-on in these deployments.

Prerequisites

- SharePoint 2013 Enterprise
- NetScaler 10.5

Product Version and License

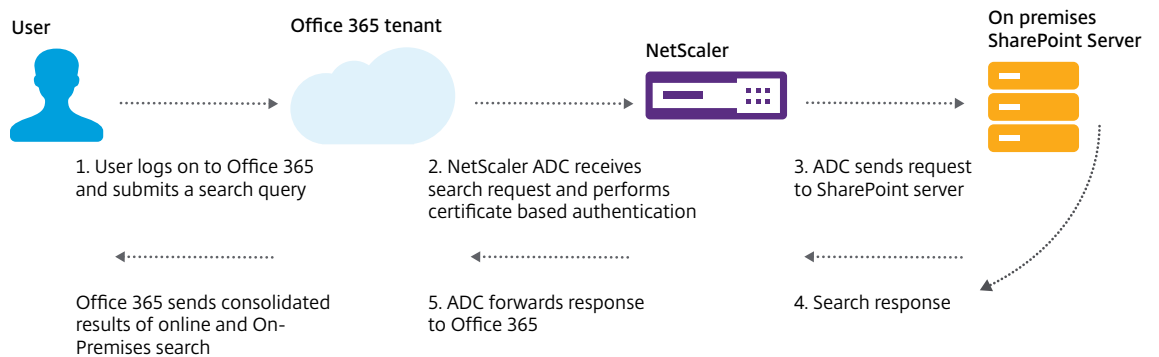
Product	Version
NetScaler	10.5
NS license	Any
SharePoint 2013	

Workflow

[sphybridlab.onmicrosoft.com](https://sphybridlab.onmicrosoft.com)

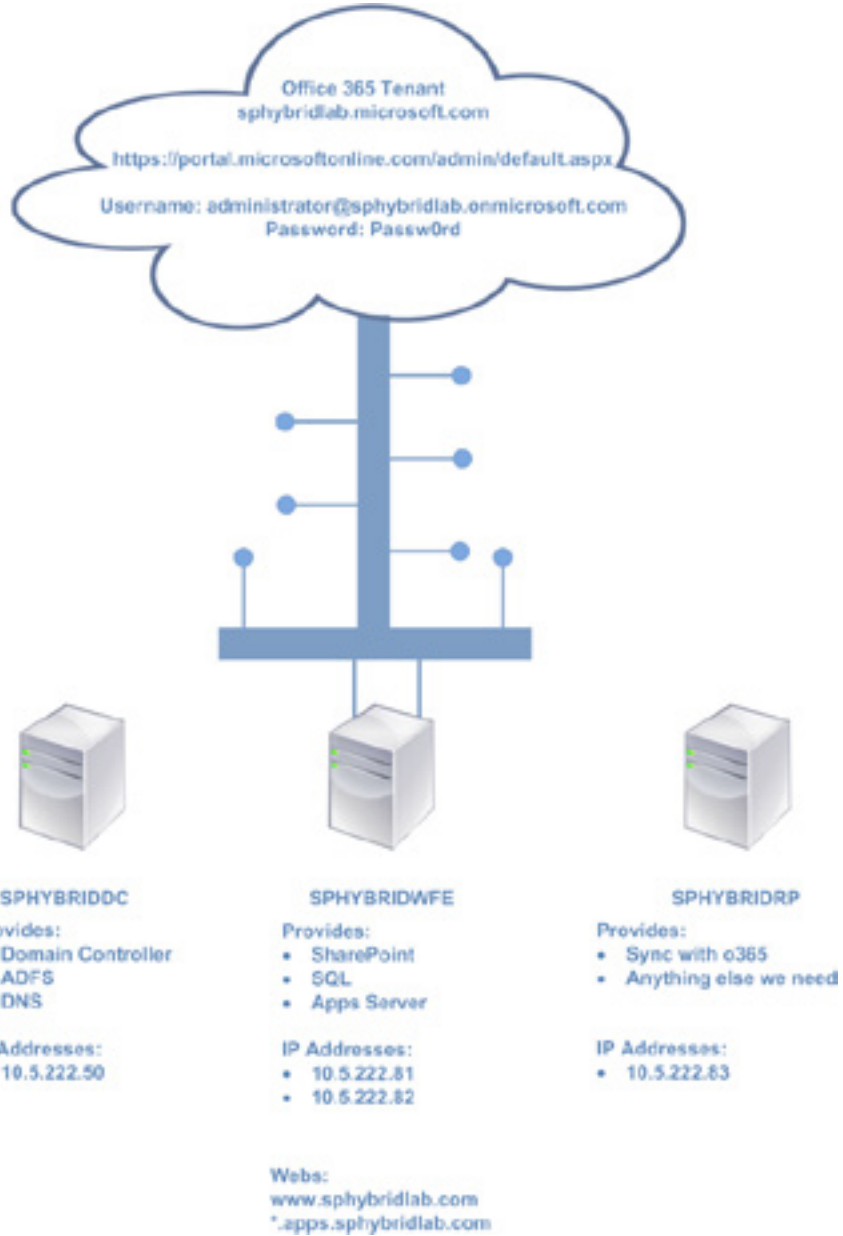
<https://portal.onmicrosoft.com/admin/default.aspx>

administrator / Passw0rd



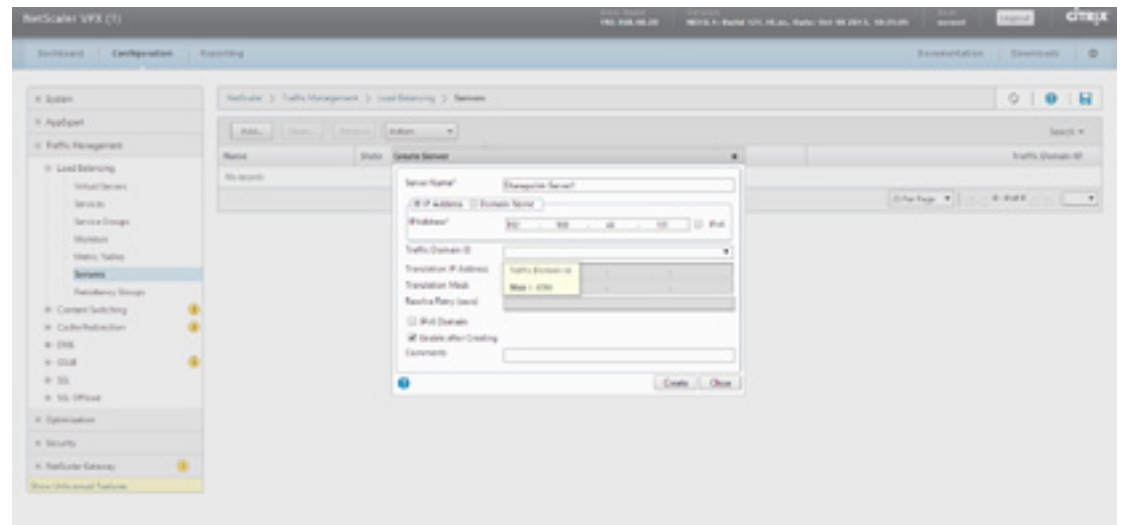
Topology

The following diagram shows the topology of the Microsoft site, with sample values. A reverse proxy device is used between SharePoint farm and Internet. Hybrid feature is configured to use the secure store service. Reverse Proxy is used to publish the end point for share point.

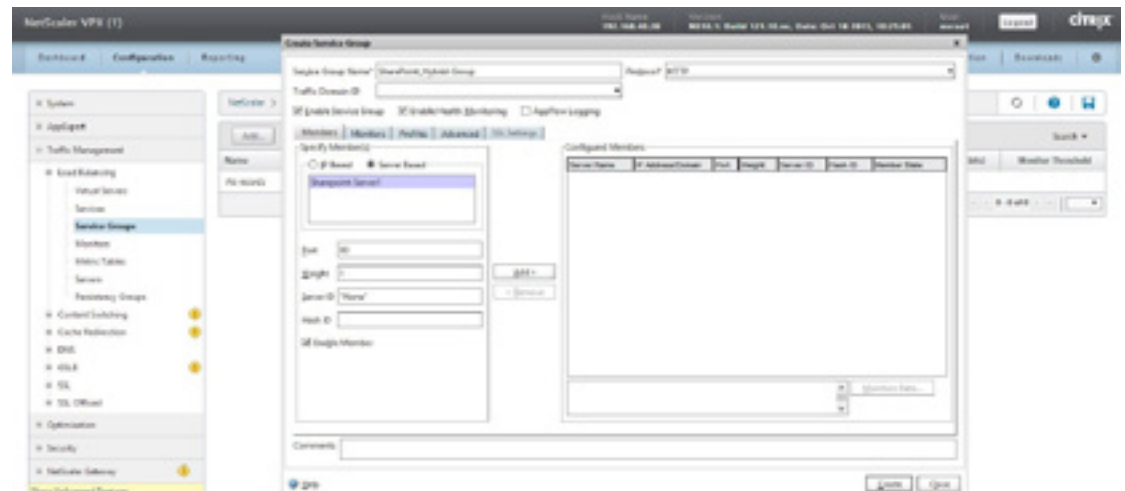


## Step by Step Configuration on Citrix® NetScaler

1. Create a SharePoint Server.

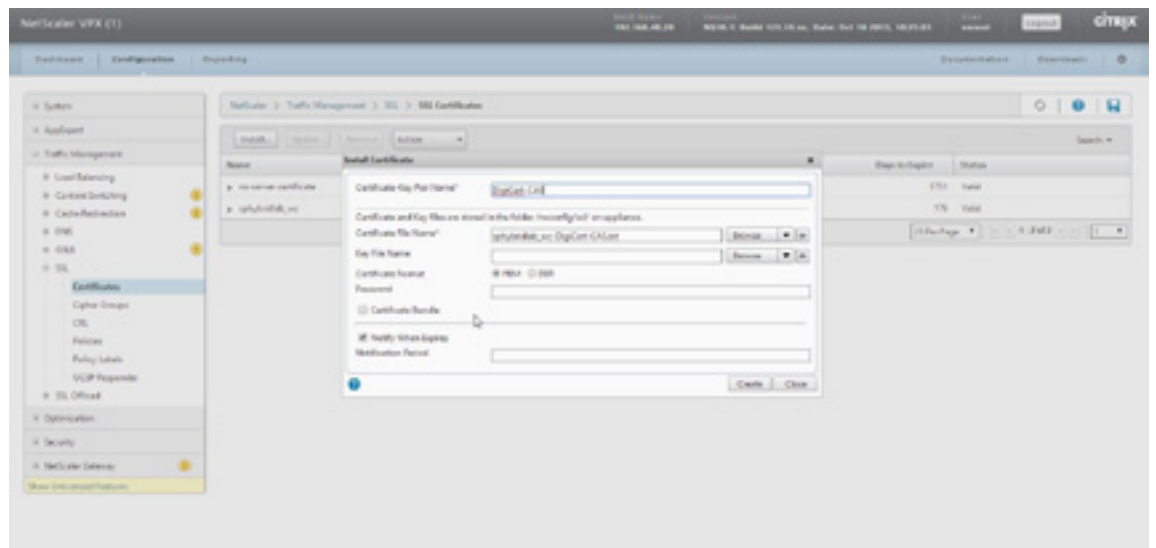


2. Create a service group for the Microsoft SharePoint server.

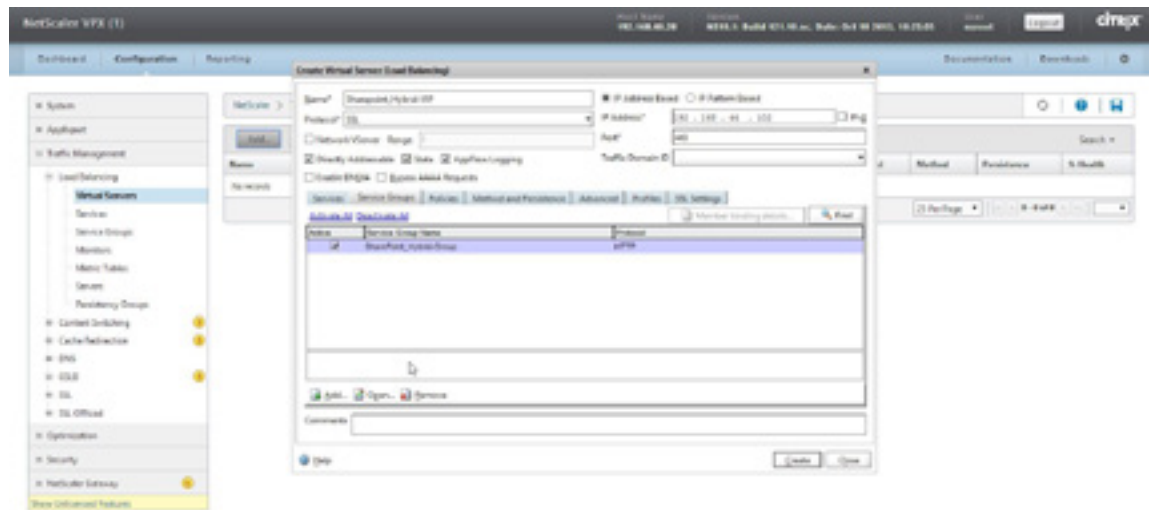




- Import a CA signing certificate chain (for example DigiCert-CA3, DigiCert-RootCA and Baltimore-RootCA).

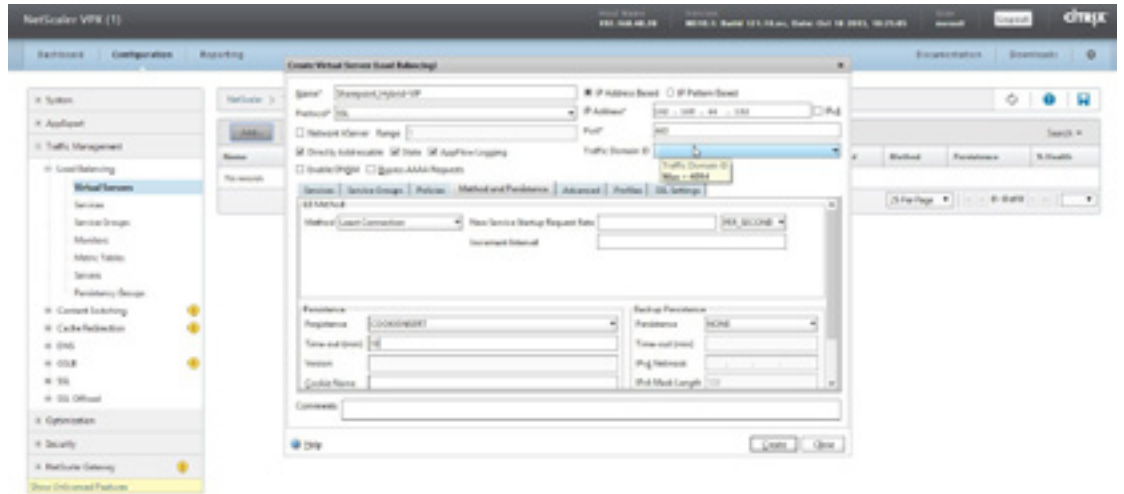


- Create a virtual server for the SharePoint Hybrid feature, listening on port 443.

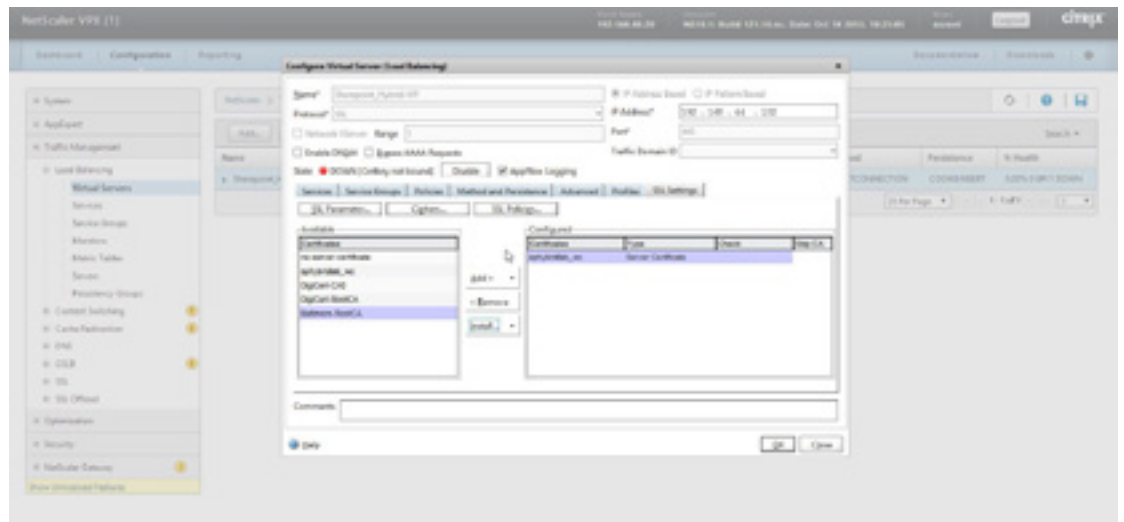


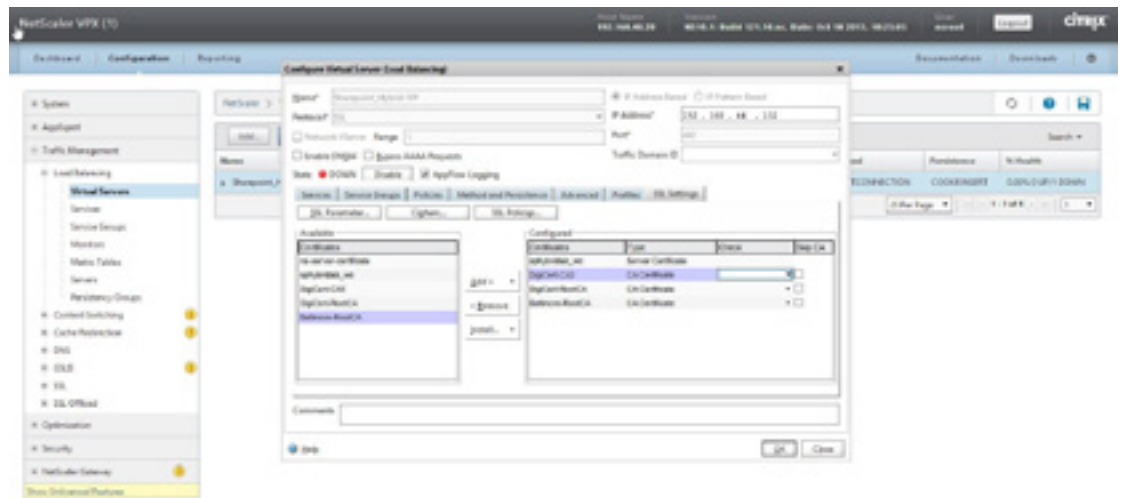
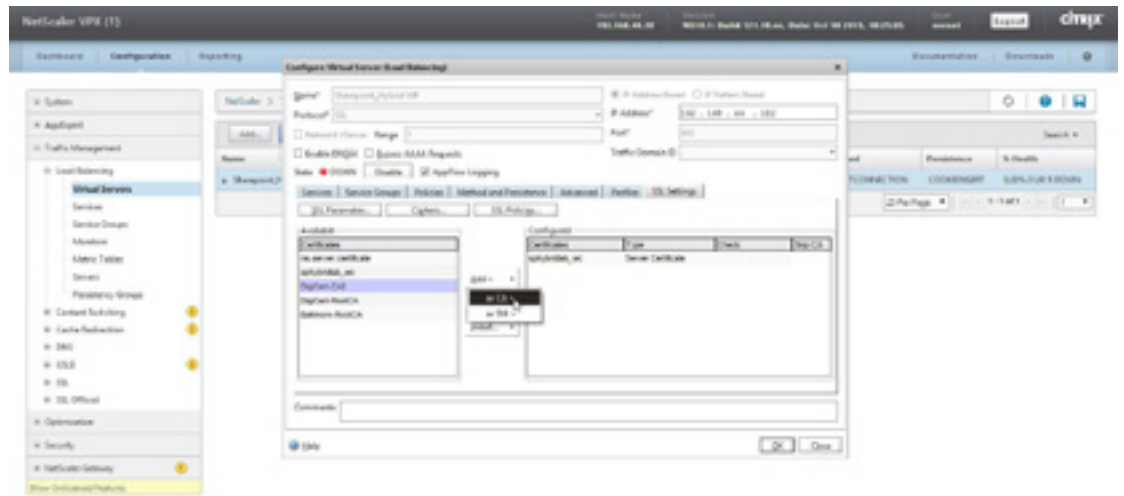


7. Specify a load balancing algorithm and cookie persistency.

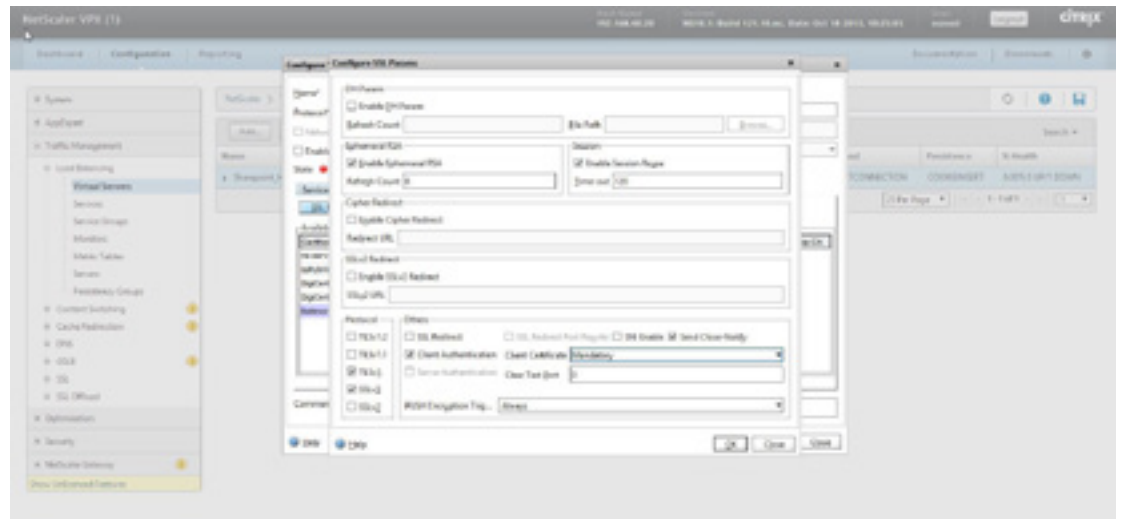


8. Bind the server certificate and signing certificate (as a CA certificate).

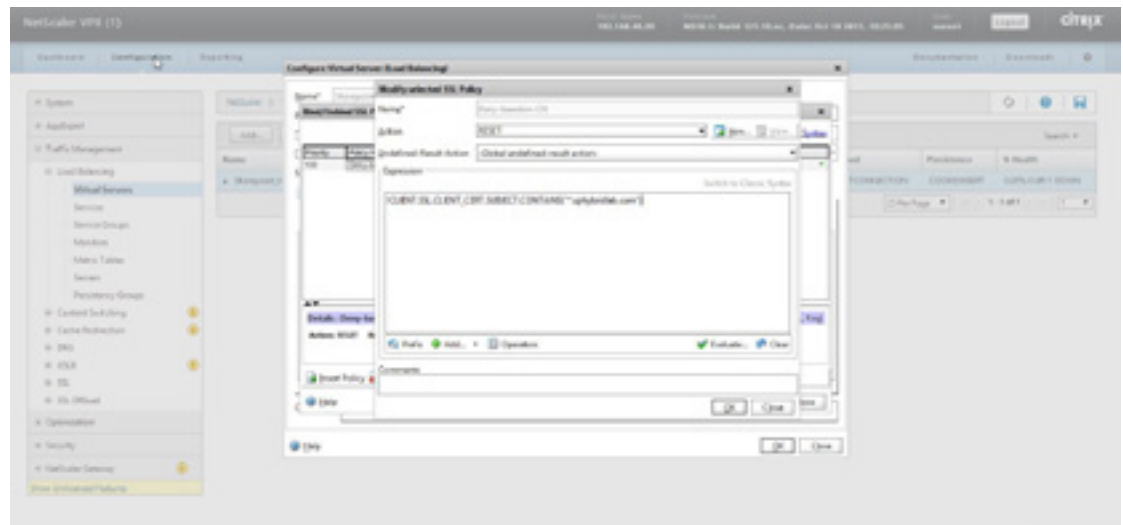


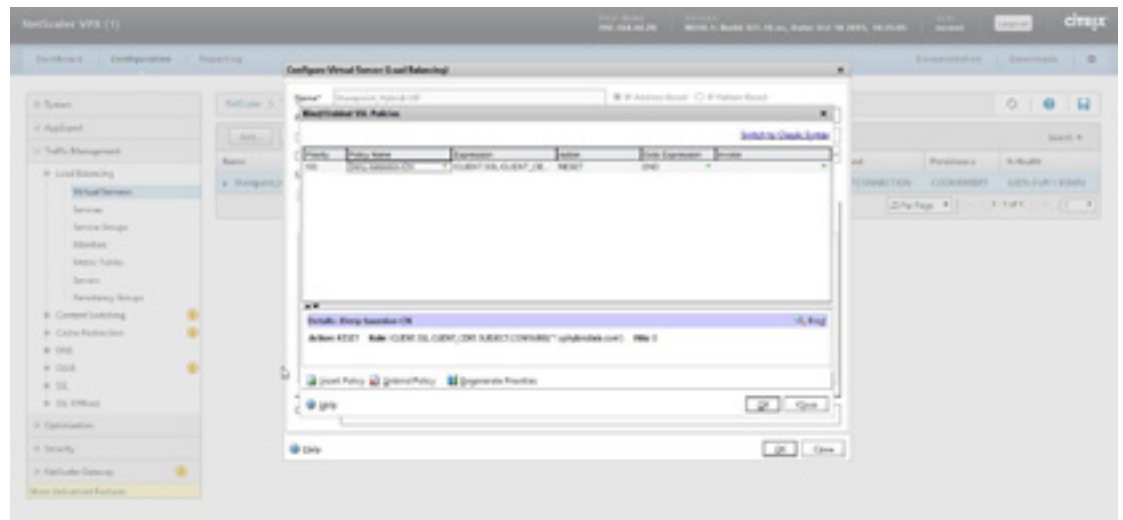


9. In the Configure SSL Params dialog box, enable client authentication.



10. Create a rule that resets the connection if the client certificate subject name doesn't match the correct domain (for example, \*.sphybridlab.com).





With this SSL policy and action NetScaler will verify incoming SSL connection having the correct certificate issued to the specific domain. This will ensure NetScaler rejects a connection attempt if the certificate CN field does not match with domain and thereby improving the bottom line security.

### Summary

Reverse proxy devices play a role in the secure configuration of a hybrid SharePoint Server 2013 deployment when inbound traffic from SharePoint Online needs to be relayed to an on-premises SharePoint Server 2013 farm.

Following are some of the benefits of deploying a SharePoint 2013 hybrid environment with NetScaler:

1. Pre-authentication of Internet users while search queries are sent to on-premises SharePoint 2013 servers
2. Monitoring and Analysis of search requests with NetScaler policy framework and web insight modules
3. Secure endpoint for inbound traffic, using SSL encryption and client certificate authentication
4. Integrated caching and cache redirection to optimize search performance
5. Data compression to minimize latency
6. Best-in-industry network attack prevention and application firewall solutions including URL filtering

### Appendix

- [http://technet.microsoft.com/en-us/library/jj838715\(v=office.15\).aspx](http://technet.microsoft.com/en-us/library/jj838715(v=office.15).aspx)
- [http://technet.microsoft.com/en-us/library/dn607304\(v=office.15\).aspx](http://technet.microsoft.com/en-us/library/dn607304(v=office.15).aspx)

**Corporate Headquarters**  
Fort Lauderdale, FL, USA

**Silicon Valley Headquarters**  
Santa Clara, CA, USA

**EMEA Headquarters**  
Schaffhausen, Switzerland

**India Development Center**  
Bangalore, India

**Online Division Headquarters**  
Santa Barbara, CA, USA

**Pacific Headquarters**  
Hong Kong, China

**Latin America Headquarters**  
Coral Gables, FL, USA

**UK Development Center**  
Chalfont, United Kingdom



**About Citrix**

Citrix (NASDAQ:CTXS) is a leader in mobile workspaces, providing virtualization, mobility management, networking and cloud services to enable new ways to work better. Citrix solutions power business mobility through secure, personal workspaces that provide people with instant access to apps, desktops, data and communications on any device, over any network and cloud. This year Citrix is celebrating 25 years of innovation, making IT simpler and people more productive. With annual revenue in 2013 of \$2.9 billion, Citrix solutions are in use at more than 330,000 organizations and by over 100 million users globally. Learn more at [www.citrix.com](http://www.citrix.com).

Copyright © 2014 Citrix Systems, Inc. All rights reserved. Citrix and NetScaler are trademarks of Citrix Systems, Inc. and/or one of its subsidiaries, and may be registered in the U.S. and other countries. Other product and company names mentioned herein may be trademarks of their respective companies.