

# NetScaler for Microsoft Lync 2013

Microsoft Lync is an enterprise-ready unified communications platform. Lync makes it easy for people to connect securely anywhere they have network connectivity using a variety of devices like PCs, tablets and mobile phones. Lync provides enterprise users with a consistent, single client experience for real-time communications including instant messaging, voice, and video for an unmatched experience. Now users can easily connect with hundreds of millions of people around the world.

## Maximize Lync with an all-in one web application delivery controller

Businesses need to ensure:

- Real time communication
- Availability of resources
- Lower congestion levels to accelerate response times

Citrix NetScaler is the industry's leading all-in-one web application delivery controller that provides a scalable and highly accessible platform for Microsoft technology deployments like Lync 2013. The real-time nature of Lync makes reliability a high priority for IT departments. Whether you are responsible for running an enterprise datacenter or you are a service provider spanning multiple customers, you are expected to ensure these communication services are able to provide maximum uptime, security from malicious activity and access from a range of mobile devices. NetScaler can ensure these needs are met for Lync. NetScaler has the power to run Lync up to five times faster, delivering unmatched performance and availability for the workforce. Additional NetScaler benefits for Lync include:

### **An optimal user experience**

NetScaler's load balancing methods guarantee an optimal user experience by leveraging advanced traffic distribution methods. Using pre-existing templates for Lync 2013 and 2010, NetScaler becomes the connectivity point to multiple front-end servers in an Enterprise pool. This ensures that Lync servers have the lowest number of connections. Now users are not randomly sent to a server that may be nearly overwhelmed.

### **Accelerated performance**

NetScaler accelerates Lync by optimizing TCP connections. Citrix has developed improvements and extensions to minimize the effects of congestion, packet loss, and recovery. NetScaler addresses latency, packet loss and congestion characteristics of WAN links in real time to improve response times and accelerate all traffic types.

### **Real-time communications**

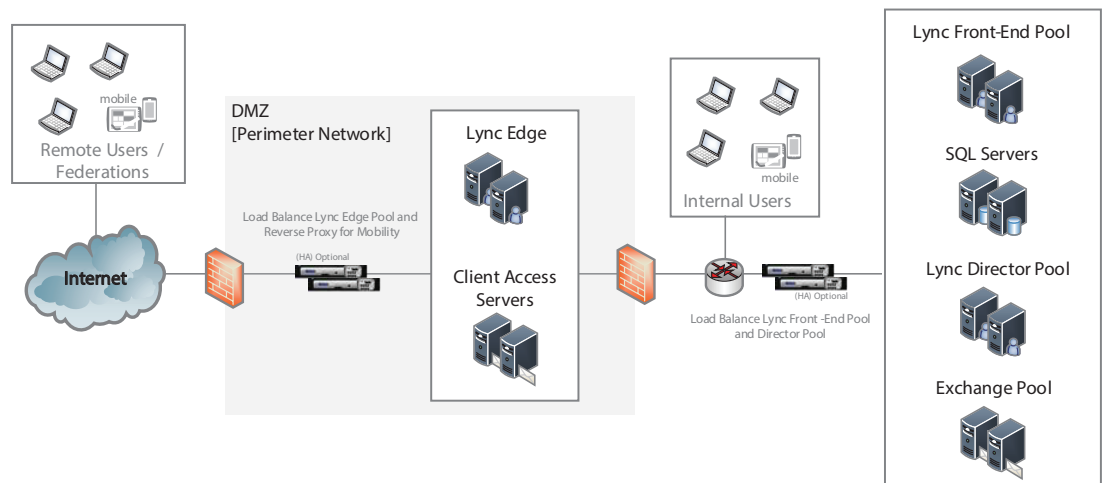
Lync Server sessions can be long-lived. Therefore, NetScaler offers additional settings that ensure the avoidance of early time out and session resets. IT administrators can now have high confidence in their real-time Lync communications.

## NetScaler + Microsoft Lync Compatibility

NetScaler seamlessly configures into any Microsoft infrastructure. Utilizing configuration templates for key Microsoft applications and built-in System Center integration provides the choice of physical or virtual appliances. Set-up wizards and AppExpert templates make integrating and configuring NetScaler with Microsoft technologies easy (see Figure 1). Template features include:

- Pre-configured policies for advanced optimizations like caching and compression
- Modify existing templates and save changes for increased agility
- Replicate exact configurations easily for improved scalability

**Figure 1**



Already deployed in thousands of networks around the globe, NetScaler supports the scalable, reliable, secure delivery of Microsoft Lync 2013 and introduces centralized management and application visibility and control. Now your organization can take advantage of high reliability levels, improved end user experiences and increased security, all while reducing Lync ownership costs.

Learn more about how Microsoft Lync 2013 deployed on Citrix NetScaler can reduce the costs associated with deploying, managing and operating your environment. Visit our partner page at [Citrix.com/NetScaler](http://Citrix.com/NetScaler).

### About Citrix

Citrix Systems, Inc. (NASDAQ: CTXS) is the leading provider of virtualization, networking and software as a service technologies for more than 230,000 organizations worldwide. Its Citrix Delivery Center, Citrix Cloud Center (C3) and Citrix Online Services product families radically simplify computing for millions of users, delivering applications as an on-demand service to any user, in any location on any device. Citrix customers include the world's largest Internet companies, 99 percent of Fortune Global 500 enterprises, and hundreds of thousands of small businesses and prosumers worldwide. Citrix partners with over 10,000 companies worldwide in more than 100 countries. Founded in 1989, annual revenue in 2010 was \$1.87 billion.

©2011 Citrix Systems, Inc. All rights reserved. Citrix®, NetScaler® and Citrix Application™ are trademarks of Citrix Systems, Inc. and/or one or more of its subsidiaries, and may be registered in the United States Patent and Trademark Office and in the other countries. All other trademarks and registered trademarks are the property of their respective owners.