



CITRIX®

Digital Workspace **SHOWDOWN**

Why Citrix Workspace™ is a better choice
than VMware Workspace ONE



Take a closer look at the dozen ways that Citrix Workspace outperforms VMware Workspace ONE.

Today's workers expect to have a great employee experience with the technology they use at work. They want the simplicity, flexibility, and ease-of-use that they get from their consumer devices.

That, in a nutshell, is likely the primary reason why you're looking into implementing a digital workspace solution. Digital workspaces make work possible no matter where your workers are located, or what devices or applications they use.

If it was simple, then VMware Workspace ONE could handle it.

The fact is implementing digital workspaces has ramifications that ripple throughout the organization. Can your chosen solution really transform the employee experience by organizing, guiding, and automating work? Can it give workers the seamless experiences they expect? Does it give you the choices and flexibility you need to confidently and seamlessly complete your march to digital transformation? Can you be sure that the workspaces and the secrets in your data center stay safe when workers might use SaaS applications, visit insecure websites, or engage in risky behaviors?

To handle all of the above, only Citrix Workspace will do. In fact there are 12 distinct differences. Here, we lay them out in stark detail. Read on and ask yourself **which is the better choice for your organization.**



User Experience, Productivity and Engagement

Employee experience, which is productivity + engagement, is at the heart of everything. By organizing, guiding and automating work, Citrix Workspace enables your employees to work in a unified, secure and intelligent way that unlocks innovation, engages employees, and delivers better business results.

Organize: Only Citrix Workspace provides a unified and omnichannel experience to all users by aggregating all relevant content, data, apps and desktops. It provides single-click access to common actions of LOB apps through the use of microapplications, which users need to get their work done.

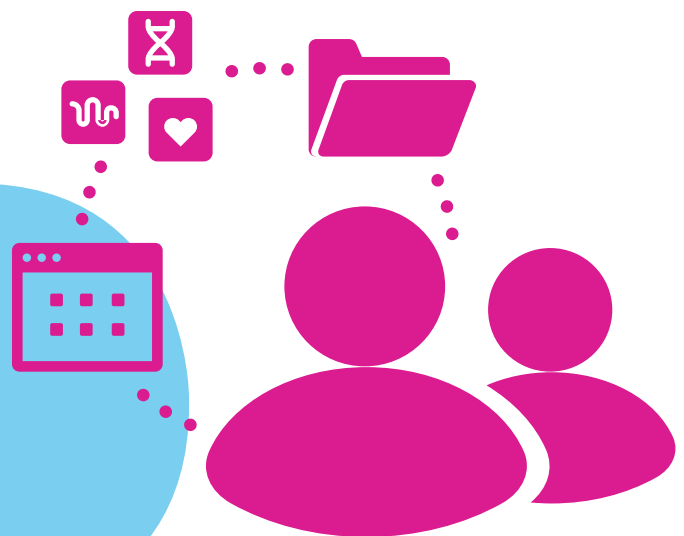
Guide: Only Citrix Workspace helps guide and focus work by reducing noise and organizing the constant stream of information and tasks users get in a prioritized & personal feed. Only Citrix provides digital virtual assistance which provides immediate access to relevant content and business data.

Users get quick answers to frequent everyday routine queries, automate tasks like setting up meetings, get key sales insight or look up co-workers.

Automate: By infusing this experience with machine learning, Citrix uniquely empowers employees with assistance and guidance enabling intelligent automation for work.

Greater User Productivity

Only Citrix Workspace delivers a transformative employee experience that **organizes, guides, and automates work.**



Citrix Workspace

VMware Workspace ONE

1

Intelligent Experience

Applications, files, microapps, actionable notifications and insights as well as a unified newsfeed and virtual assistant integrate into a unified, context-aware user front end that is accessible from all devices. It provides a single experience for employees to get work done quickly and efficiently.

Users have to use multiple tools to access their files and apps. VMware does not provide a unified newsfeed, actionable insights or microapps.

2

Performance Across Constrained Networks

SD-WAN technology delivers the optimum application-specific path across available networks. The Citrix HDX™ protocol preserves the user experience under poor conditions, even for applications like Skype and Teams.

Users see their productivity negatively impacted while waiting for files to load or the screen content to fully render, and they suffer from poor text and image quality.

3

Integration with Microsoft Office

Mobile users can seamlessly open Office files attached to Citrix Secure Mail and cut, copy, and paste into other mobile apps. Citrix file sync and sharing technology integrates with Microsoft Teams.

Mobile users need multiple steps to open Office files attached to their VMware Boxer email and copy/paste content. VMware's Content Locker for file syncing and sharing does not integrate with Microsoft Teams.

4

File Synchronization /Content Collaboration

Users collaborate simply and more efficiently, regardless of location, device, or whether sharing documents with coworkers or external parties. Power users create custom workflows via a drag-and-drop wizard.

Collaboration is limited to syncing files back and forth with no live editing. No support for workflows weakens security, and development resources are required to replicate paper forms.



Cloud Transformation and Management

The more choices you have, the more confidence you can have that you will be able to complete your cloud transformation successfully.

That means flexibility to adopt any combination of on-premises, public, and private cloud delivery models. You can support whatever mobile devices your users prefer, allow them to work in more places, provide more locations for them to store and access their work files, and enable them to collaborate seamlessly with colleagues.

But choices can't come at the cost of control. You need to be able to manage users, devices, data, workloads, and networks centrally, so you'll modernize while maximizing your existing investments.

Superior IT Flexibility



Compared to Workspace ONE, **Citrix Workspace offers more choices for IT** while streamlining management, which makes it easier to smoothly transition and accomplish digital transformation without disrupting the business.

Citrix Workspace

VMware Workspace ONE

5

Unified Management

Digital workspaces may be deployed on premises or on public, private, or hybrid clouds—all managed through a single pane of glass.

All components of Workspace ONE each have a separate management console, decreasing efficiency and making troubleshooting more complex.

6

VDI Platform Support

A virtual desktop infrastructure can be hosted on any hypervisor, cloud or physical platform; choosing the most cost-effective platform reduces operational cost.

VMware supports limited virtualization platforms, with inconsistent features and capabilities. Limited flexibility prevents companies from transforming the business quickly or efficiently.

7

Device Support /Application Protection

Support for any device OS and choice of containerization and mobile device management platforms maximize flexibility for protecting applications. A unique mVPN and bridgeless integration with Microsoft EMS/Intune and Office 365 deliver the best experience with high security.

Security concerns limit end users' options for devices and applications. Lack of mVPN and no bridgeless integration with Intune MAM mean greater risk for organizations with mobile Office 365 users.

8

Better Management

Proactive service availability monitoring, more efficient user incident handling, extensive historic reporting and agile management of any application are just a few of the unique capabilities that make workspace management with Citrix more efficient.

Only provides basic insights into user sessions, limited reporting and no service monitoring. App management requires complex infrastructure and cannot handle all applications.



Security and Compliance

Your security teams need to protect corporate data assets while devices connect from anywhere, including over public networks.

The security concerns are partially addressed by use of virtual desktops, which keep the applications and data in the data center. But only partially. Workers still need to access SaaS applications, they could visit insecure websites, and the security model must account for risky behaviors such as copying sensitive files onto removable drives or opening phishing emails. These can expose your business to potential data breaches or other compliance risks.

The old approach of securing the perimeter has given way to the need to ensure end-to-end security—to the ends of the earth, if need be. That means protecting apps and data and controlling user access while supporting a growing number of devices and services.

More Security Controls

Compared to Workspace ONE, **Citrix Workspace implements more security controls** for common threats, including malware, phishing attacks, and user error.



Citrix Workspace

VMware Workspace ONE

9

App Protection

Protect SaaS, Web, Windows and Linux apps from keylogging and screen-capturing malware that could steal potentially sensitive data.

No protection against keylogging or screen-capture.

10

Cloud Application Security

Security teams can block access to unsanctioned SaaS apps and the Internet and protect sensitive data from actions such as copy/paste or download. A hardened browser protects against malware, data loss, and end user behavior while the web filter controls website access.

Limited cloud application security means that security-conscious organizations need to adopt third-party solutions, increasing cost and complexity. With no copy/paste restrictions or watermarking, sensitive data can be exfiltrated from SaaS apps.

11

User Behavior Analytics

Citrix Analytics uniquely aggregates and correlates user interaction with applications, devices, networks, and data to proactively identify and manage internal and external threats.

Limited analytics primarily focus on security of devices enrolled to AirWatch and self-developed mobile applications.

12

Security Model

Support for a risk-based security model using scoring dynamically balances the needs of users to have rapid access to data against IT's need to secure and govern the environment.

Rather than machine learning and scoring, administrators must define static thresholds, which are inflexible and error-prone.



Citrix is reimagining the future of work, unlocking creativity, productivity, and innovation to make the extraordinary possible.

From healthcare to financial services to the manufacturing floor, people have real-time intelligence and are connected in ways that allow them to work faster and smarter to deliver greater outcomes for the business and customers alike.



To learn more, visit
<http://citrix.com/workspace>.